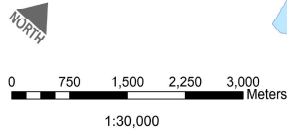
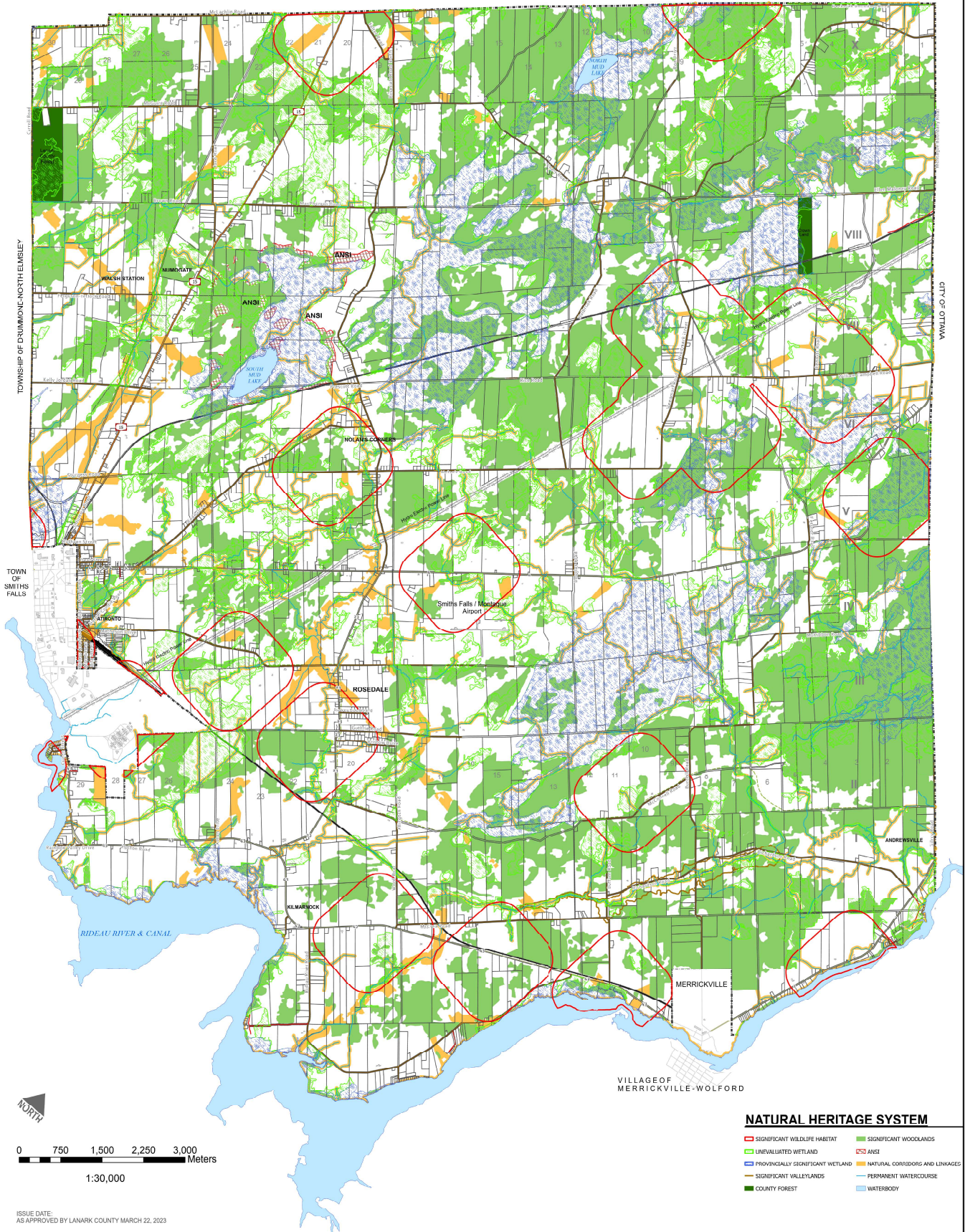




Township of Montague OFFICIAL PLAN SCHEDULE C

DECKWITH TOWNSHIP



ISSUE DATE: AS APPROVED BY LANARK COUNTY MARCH 22, 2023

Jp2g Consultants Inc.
ENGINEERS - PLANNERS - PROJECT MANAGERS

SCHEDULES PRODUCED BY JP2G CONSULTANTS INC. WITH DATA SUPPLIED BY THE CENTRE FOR GEOSPATIAL INFORMATION SYSTEMS (CGIS) AND ANSIS. MAP SCHEDULES ARE NOT INTENDED TO BE USED FOR LEGAL PURPOSES OR TO IDENTIFY EXACT LOCATIONS OF NATURAL HERITAGE ELEMENTS. FIELD SURVEYS AND VISUAL INSPECTIONS ARE REQUIRED TO CONFIRM ACTUAL LOCATION OF EXISTING CONDITIONS AND/OR PROPOSED ELEMENTS.

- NATURAL HERITAGE SYSTEM**
- SIGNIFICANT WILDLIFE HABITAT
 - SIGNIFICANT WOODLANDS
 - UNFLOODED WETLAND
 - PROVINCIALLY SIGNIFICANT WETLAND
 - NATURAL CORRIDORS AND LINKAGES
 - SIGNIFICANT VALLEYLANDS
 - PERMANENT WATERCOURSE
 - COUNTY FOREST
 - WATERBODY
 - ANSI
- ROADS**
- PRIVATE ROAD
 - COUNTY ROAD
 - TRAILS
 - TOWNSHIP ROAD
 - PROVINCIAL HIGHWAY