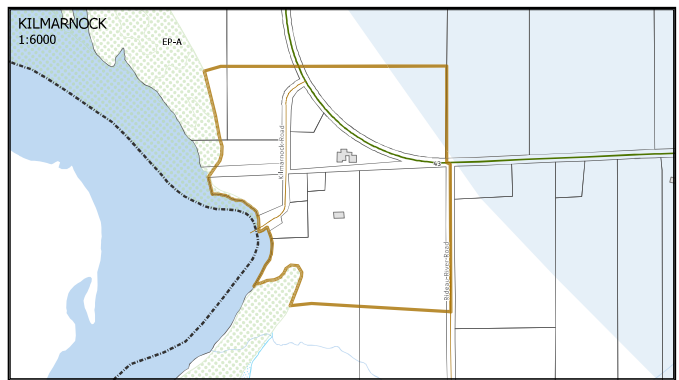
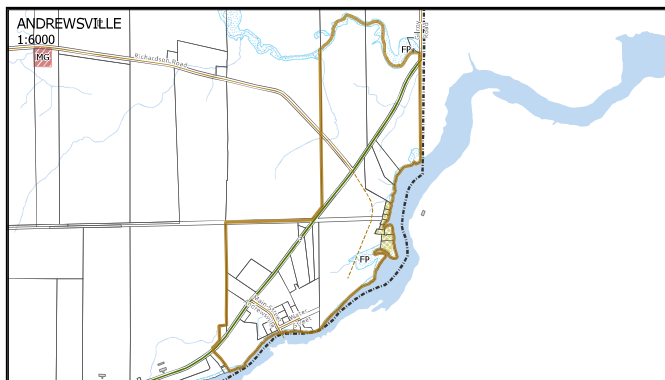
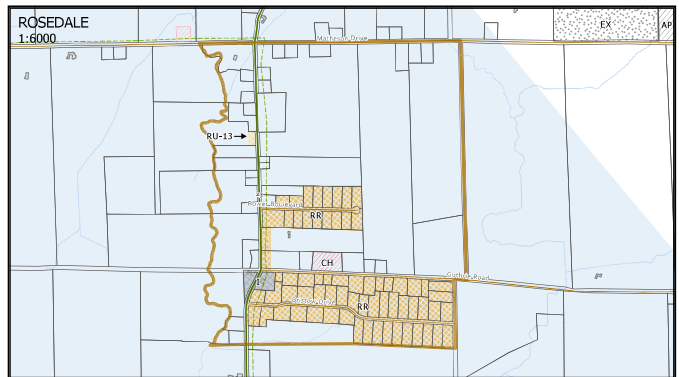
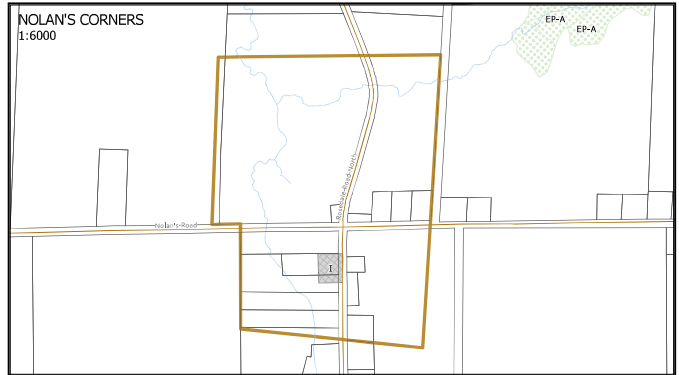
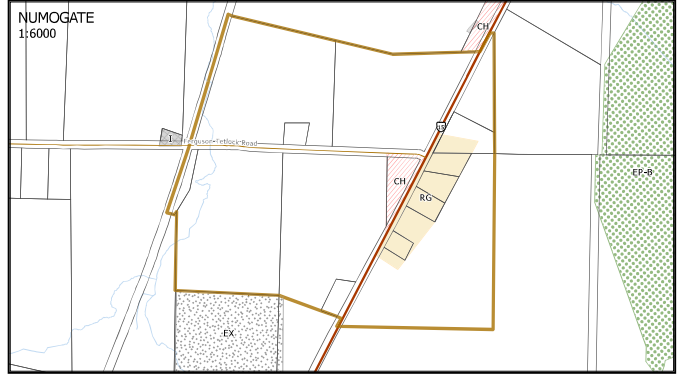
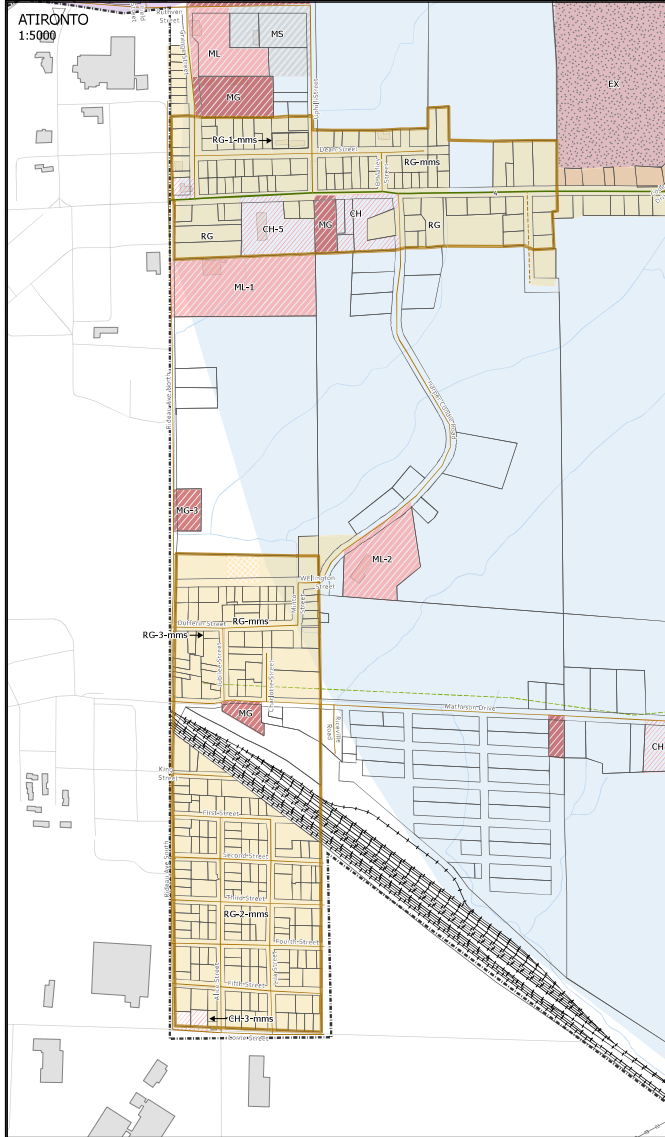




# Township of Montague

## ZONING BY-LAW

### SCHEDULE A-1



A - AGRICULTURE	RU - RURAL	FP - FLOODPLAIN
AP - AIRPORT	RU - RURAL EXCEPTION	MBP - BUSINESS PARK INDUSTRIAL
CH - HIGHWAY COMMERCIAL	RR - RURAL RESIDENTIAL	MS - SALVAGE YARD INDUSTRIAL
CT - TOURIST COMMERCIAL	RLS - LIMITED SERVICES RESIDENTIAL	IP2-3 (Vulnerability Score 6)
CG - GENERAL COMMERCIAL	RMH - MOBILE HOME PARK RESIDENTIAL	WHPA-B (Vulnerability Score 6)
I - INSTITUTIONAL	RG - GENERAL RESIDENTIAL	WHPA-C (Vulnerability Score 4)
MG - GENERAL INDUSTRIAL	EP-A - ENVIRONMENTAL PROTECTION "A"	WHPA-C (Vulnerability Score 6)
ML - LIGHT INDUSTRIAL	EP-B - ENVIRONMENTAL PROTECTION "B"	
OS - OPEN SPACE	EX - MINERAL AGGREGATE EXTRACTION	
PROVINCIAL HIGHWAY	TOWNSHIP ROAD	TRAILS
COUNTY ROAD	PRIVATE ROAD	SETTLEMENT AREA



ISSUE DATE:  
COUNCIL APPROVED, MAY 2024

**Jp2a Consultants Inc.**  
ENGINEERS PLANNERS PROJECT MANAGERS

SCHEDULES PRODUCED BY JP2A CONSULTANTS INC. WITH DATA SUPPLIED BY THE CENTRE FOR GEOGRAPHIC INFORMATION SYSTEMS (CGIS) AND ANDRIUM. MBP SCHEDULES ARE NOT INTENDED TO BE USED FOR LEGAL PURPOSES OR TO IDENTIFY EXACT LOCATIONS OF MAP ELEMENTS. VERIFICATION AND SURVEY OF EXISTING CONDITIONS IS REQUIRED TO CONFIRM ACTUAL LOCATION OF EXISTING CONDITIONS AND/OR PROPOSED ELEMENTS.