

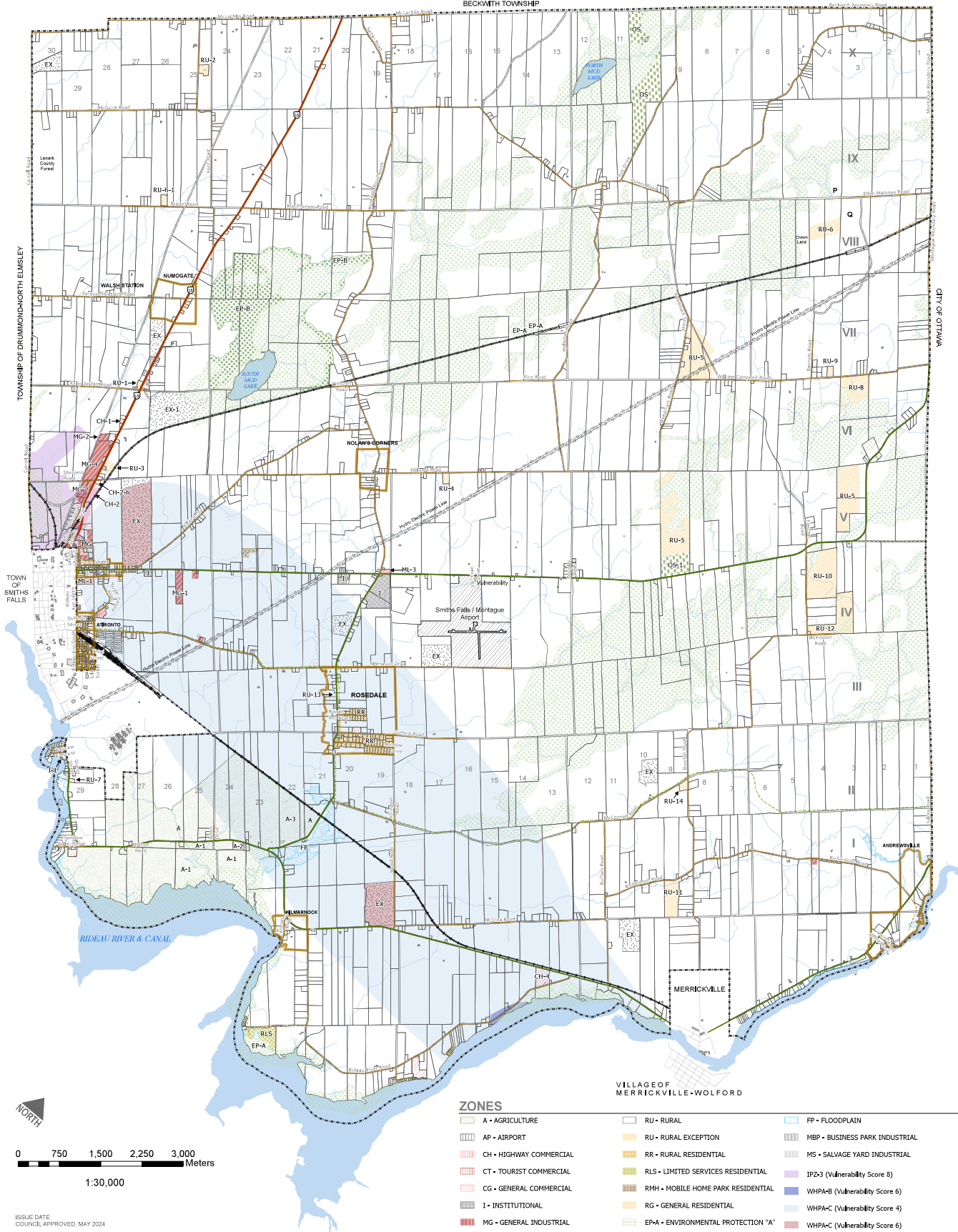


Township of Montague

ZONING BY-LAW

SCHEDULE A

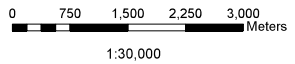
BECKMITH TOWNSHIP



TOWNSHIP OF DRUMMOND/NORTH ELMLEY

TOWN OF SMITHS FALLS

CITY OF OTTAWA



ISSUE DATE:
COUNCIL APPROVED, MAY 2024

Jp2g Consultants Inc.
ENGINEERS - PLANNERS - PROJECT MANAGERS

SCHEDULES PRODUCED BY JP2G CONSULTANTS INC. WITH DATA SUPPLIED BY THE CENTRE FOR GEOGRAPHIC INFORMATION SYSTEMS (CGIS) AND WILSON. MAP SCHEDULES ARE NOT INTENDED TO BE USED FOR LEGAL PURPOSES OR TO IDENTIFY EXACT LOCATIONS OF MAP ELEMENTS. VERIFICATION AND SURVEY OF EXISTING CONDITIONS IS REQUIRED TO CONFIRM ACTUAL LOCATION OF EXISTING CONDITIONS AND/OR PROPOSED ELEMENTS.

ZONES

A - AGRICULTURE	RU - RURAL	FP - FLOODPLAIN
AP - AIRPORT	RU - RURAL EXCEPTION	MBP - BUSINESS PARK INDUSTRIAL
CH - HIGHWAY COMMERCIAL	RR - RURAL RESIDENTIAL	MS - SALVAGE YARD INDUSTRIAL
CT - TOURIST COMMERCIAL	RLS - LIMITED SERVICES RESIDENTIAL	IPZ-3 (Vulnerability Score 8)
CG - GENERAL COMMERCIAL	RMH - MOBILE HOME PARK RESIDENTIAL	WHPA-B (Vulnerability Score 6)
I - INSTITUTIONAL	RG - GENERAL RESIDENTIAL	WHPA-C (Vulnerability Score 4)
MG - GENERAL INDUSTRIAL	EP-A - ENVIRONMENTAL PROTECTION "A"	WHPA-C (Vulnerability Score 6)
ML - LIGHT INDUSTRIAL	EP-B - ENVIRONMENTAL PROTECTION "B"	
OS - OPEN SPACE	EX - MINERAL AGGREGATE EXTRACTION	

GENERAL

PROVINCIAL HIGHWAY	TOWNSHIP ROAD	TRAILS
COUNTY ROAD	PRIVATE ROAD	SETTLEMENT AREA

VILLAGE OF MERRICKVILLE-WOLFORD